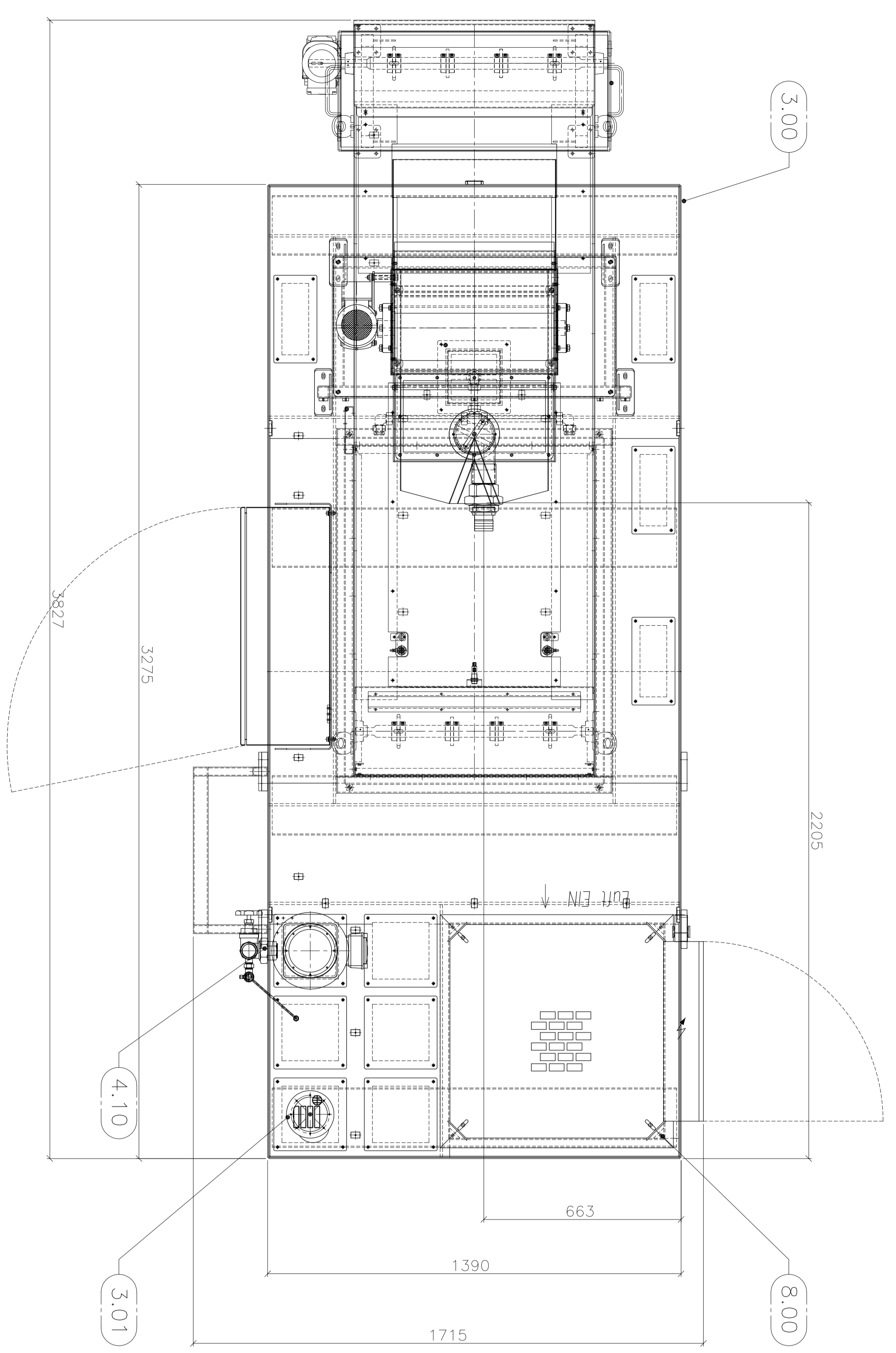


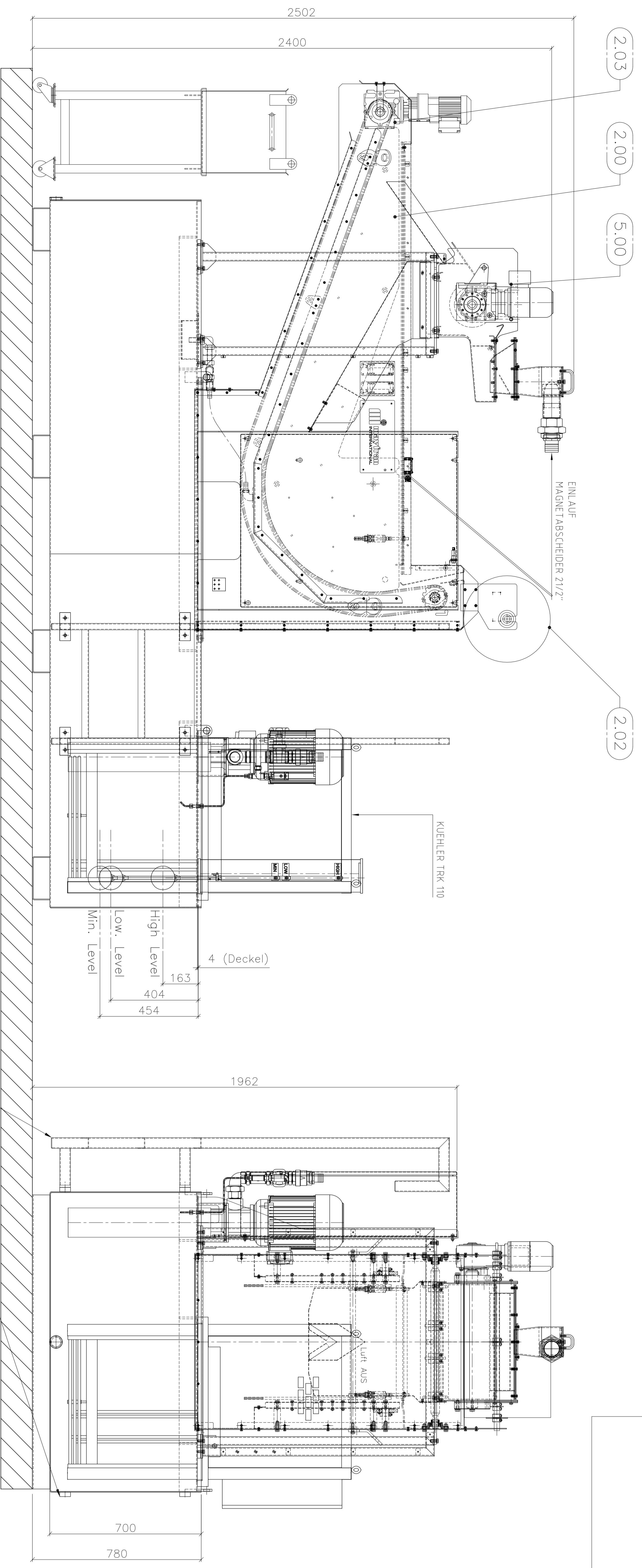
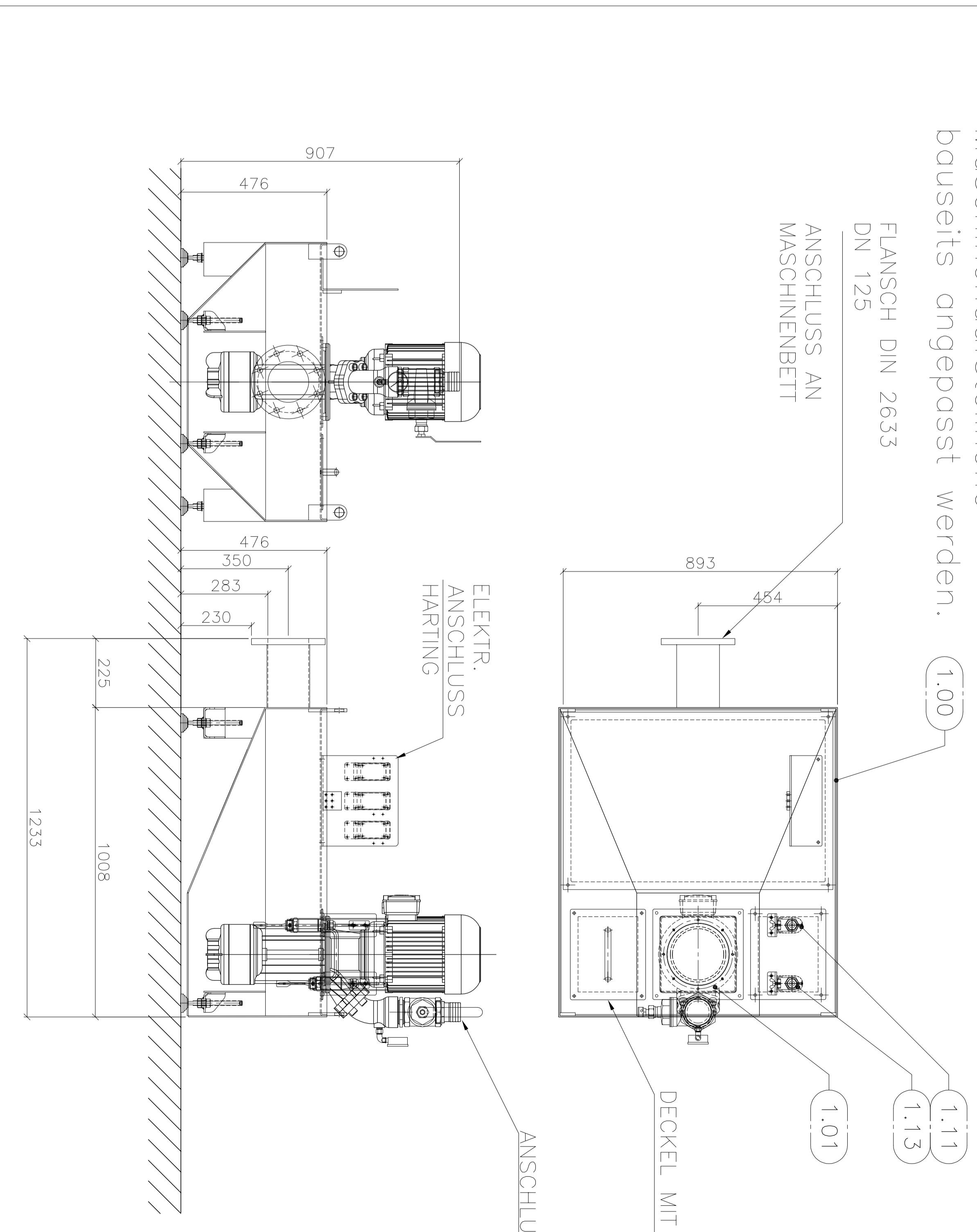
POS.	REC'D	DESCRIPTION	LOT	WIDTH	HEIGHT	PART NO.	MATERIAL	DWG. NO.	STD
1.00	1	Rückpumpstation				121235			
3.00	1	FILTERSYSTEM				121248			

Filteranlage:



Rückpumpstation:

Mindestaufstellhöhe für Flanschlauf = 283mm  
ggf. muss Maschinenaufstellhöhe bauseits angepasst werden.



SPEZIFIKATIONS HPF-600 FILTER  
 FILTER : HPF-600  
 DRIVE SIDE : LEFT  
 FILTER CLOTH : 70g/m<sup>2</sup>  
 DRIVE : SEW  
 LEVEL SWITCH : LIQUIPHANT  
 MEDIUM : EMULSION  
 AMOUNT : MAX 500 LPW  
 PRE-SEPARATION : NO  
 FILTER AREA : 80 M<sup>2</sup>  
 TANK VOLUME : 3000 LTR  
 WEIGHT : ca. 1900 kg

LEITER BEIDSEITIG  
MONTERBAR

OMSCHRIJVING / REVISION		NR	DATE	MADE
01		01	06-03-2013	01

DATE	DOOR	SCHAKEL	PROEKTANT	KLIANT
06-03-2013	1-10			
15-03-2013	MADE	DO NOT SCALE		
19-04-2013	MADE	FORMA AD		

DATE	REVISION	REVISION
06-03-2013	01	01

ARTIKELNUMMER	TEKENINGNUMMER	REV
908 Lordis 37415	T121234	01

STATUS	VER
Released	003

