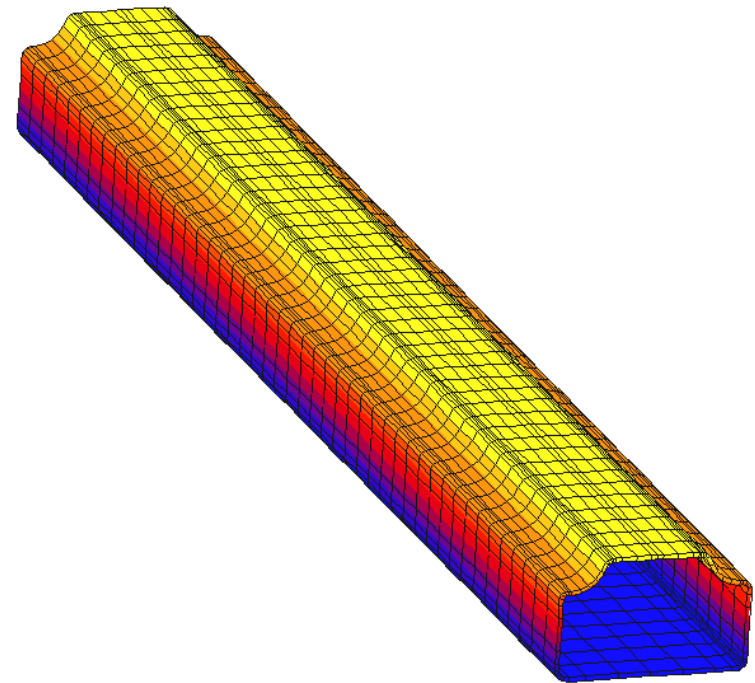
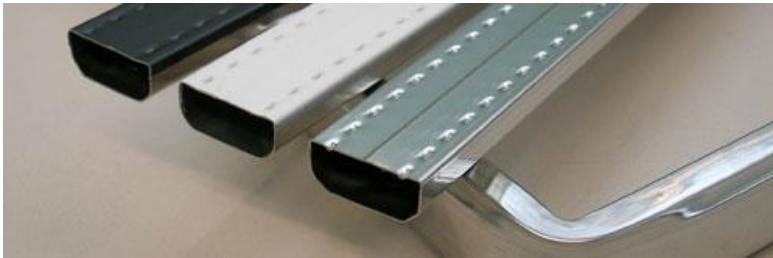


Tube welding plant for spacers



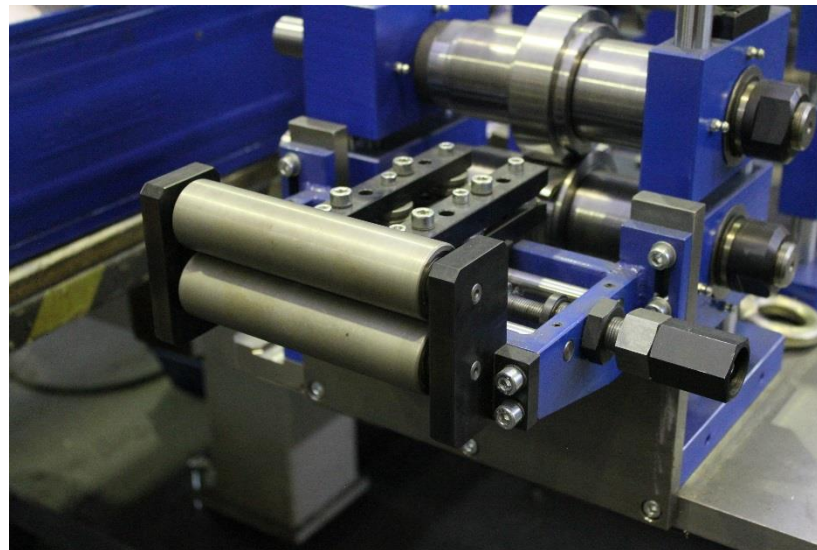
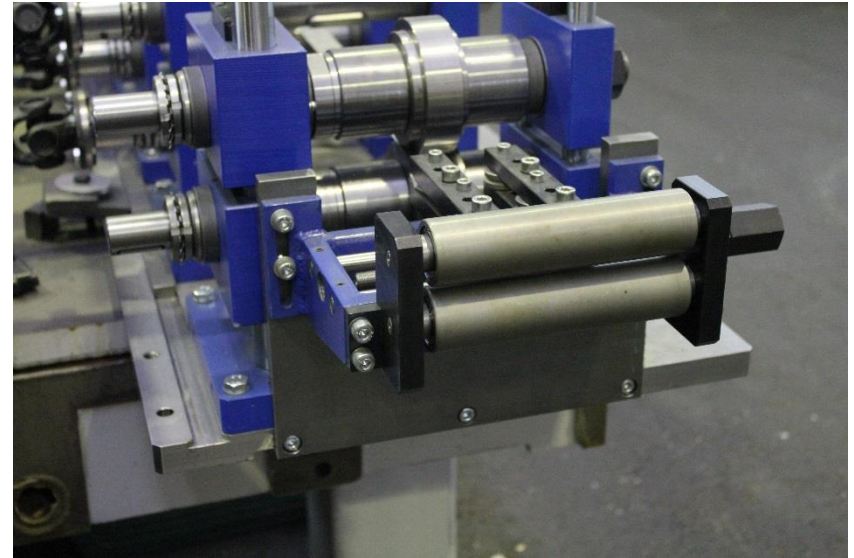
Welding type:
High Frequency

Product: Windowspacers

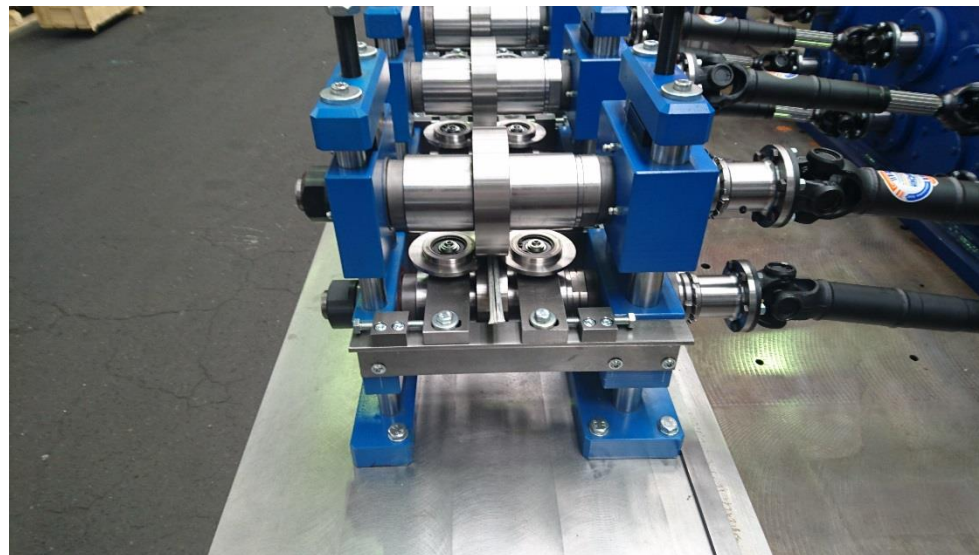
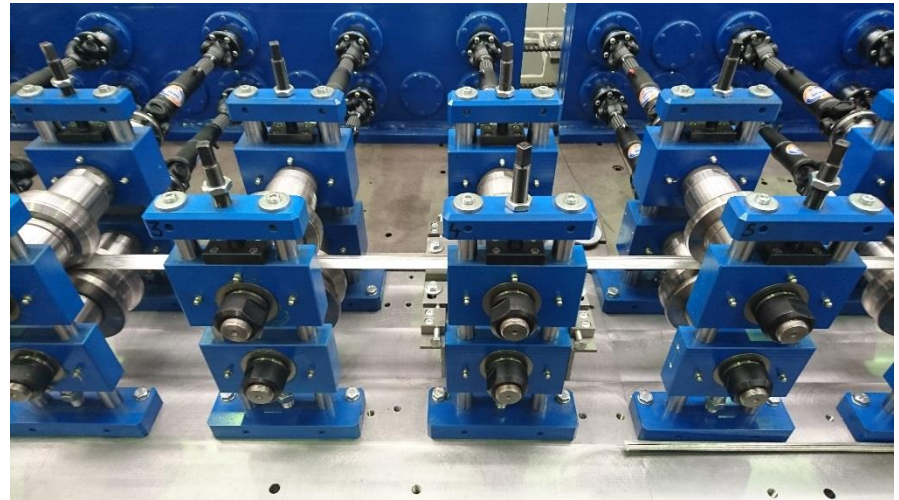


Product Range: 6-20mm
Linespeed: max. 150m/min

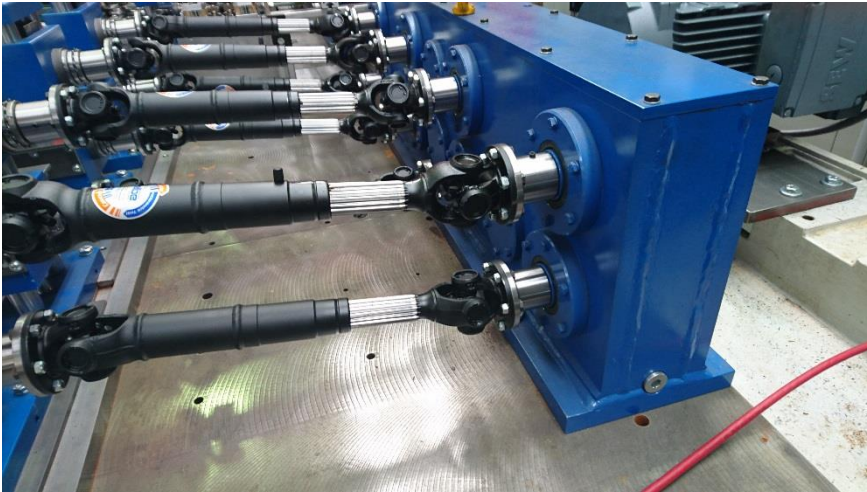
Coil infeed table mounted on the Changing plate to have exactly guiding of the strip



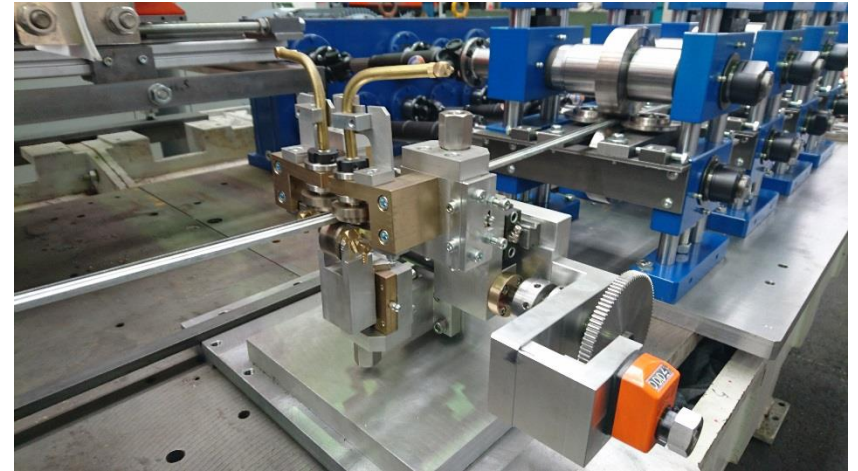
High Precision Forming Stands
with integrated side rollers to
form the strip to a spacer profile.
Specially design for high speed
and strong stability



Gear Box with hardened gear wheels for maximum power at high speed.

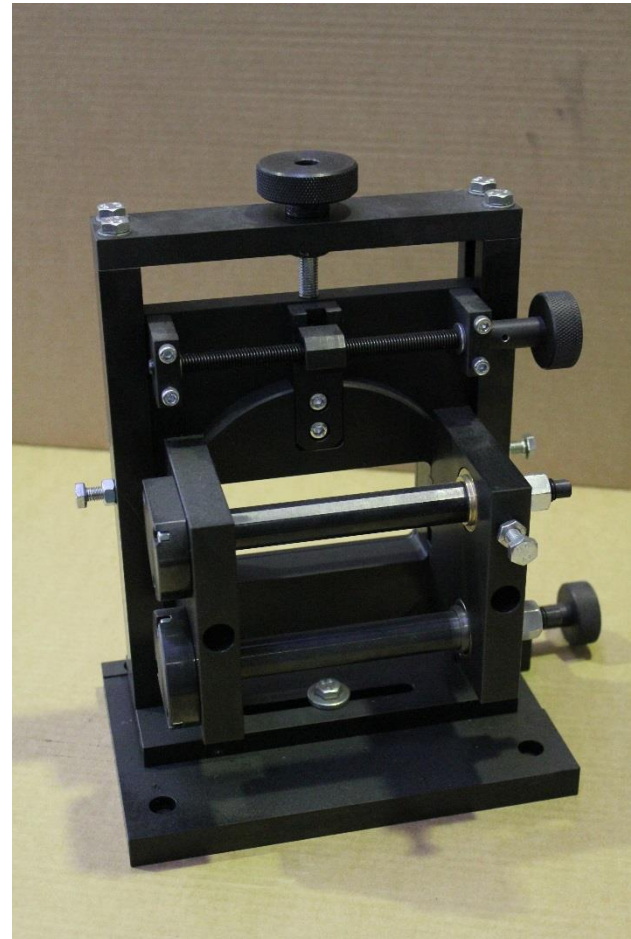


Welding table specially designed
for HF-welding for aluminium



Welding equipment
by Termomacchine Power
75KW

Straightener to align the product.



Drive and Control with german components e. g. Siemens



High Quality SEW-Motor for drive.



Spacer-Profile

